

# **UNIVERSITY OF MARYLAND UNIVERSITY COLLEGE**



## **FISCAL YEAR 2012 FACT BOOK**

**Prepared by:  
Office of Institutional Research**

## PREFACE

The University of Maryland University College Fact Book offers a comprehensive source of information from the Office of Institutional Research. It includes data for the 2012 fiscal year (July 1, 2011 through June 30, 2012). Our goal is to provide a clear and effective analysis of the University's data resources to key decision makers. We hope that the Fact Book will serve as a valuable tool for users to improve and promote the University. Any comments or suggestions you may have for our next issue are welcome.

Please visit us on the Web at [www.umuc.edu/ip](http://www.umuc.edu/ip) when you need UMUC statistics at the click of a button. There you can find the most current student and distance education information.

Denise Nadasen  
Associate Vice President, Institutional Research  
University of Maryland, University College  
2012

Please note, while the Fact Book is a reliable reference, external requests for data must be forwarded to the Office of Institutional Research. Please contact us if you have questions or require further information concerning UMUC.

---

## TABLE OF CONTENTS

---

	<b>Page</b>
<b>Student Data</b>	
Fiscal Year Unduplicated Headcount, Stateside and Overseas, Fiscal Years (FY) 1948 - 2012 (graph) .....	2
Worldwide Unduplicated Headcount, FY 1948 - 2012 .....	3
Map of UMUC Sites in Maryland, Virginia and the District of Columbia .....	4
UMUC Stateside Student Employment Status (graph) .....	4
 <b>Full-Time Equivalent Students (FTES)</b>	
FY 1976 - 2012 Worldwide FTES .....	6
FY 2005 - 2012 Worldwide FTES, by Division, by Level .....	7
 <b>Degrees</b>	
Total Worldwide Degrees Awarded, by Degree Level .....	9
Fiscal Year Worldwide Degrees Awarded (graph) .....	9
FY 2005 - 2012 Worldwide Undergraduate-level Degrees Awarded, by Degree Level, by Division .....	10
FY 2005- 2012 Worldwide Graduate-level Degrees Awarded, by Degree Level, by Division .....	11
FY 2012 Stateside Degrees Awarded, Ethnic Category, by Degree Level .....	12
 <b>Finance</b>	
Fall 1988 - 2012 Stateside In-State Tuition and Mandatory Fees .....	14
 <b>Distance Education</b>	
Worldwide Online Course Enrollments, FY 1995 - 2012 by Division .....	16
Worldwide Online Course Enrollments, FY 1995 - 2012 by Division (graph) .....	16
FY 2012 Worldwide Online and Total Student Headcounts .....	17
Stateside Online Courses, Sections and Enrollments FY 1998 - 2012.....	18

---

## GLOSSARY OF TERMS

---

Asian Division: The Asian Division consists of the sites administrated by the AD headquarters in Tokyo, Japan.

Credit Hours: Credit hours refers to the total credit hours of instruction for all classes enrolled by a student, or group of students, during a given time frame (i.e. one semester, fiscal year).

Enrollments/Registrations: Enrollments refers to the number of classes in which a student is registered. A student registered for more than one class will be counted as the corresponding number of enrollments. For example, if one student is taking two classes that student is counted as two enrollments.

European Division: The European Division consists of the sites administrated by the ED headquarters in Heidelberg, Germany.

Fiscal Year (FY): The semesters represented in a fiscal year consist of the summer and fall of one calendar year and the spring of the subsequent calendar year. For example, the summer and fall of 2003 and the spring of 2004 comprise the individual semesters of fiscal year 2004 (denoted FY04).

Full-Time Equivalent Students (FTES): please see next page – “FTES Explained”

Full-Time/Part-Time Student: Full-time status is based on 12 credit hours of enrollment for undergraduates and 9 credit hours for graduate students per semester.

Headcount: Headcount refers to the unduplicated count of students enrolled for one or more classes, within the same level (undergraduate or graduate), during the time period stated. Unduplicated means that a student is only counted once, at the undergraduate or graduate level, regardless of the number of classes taken or the number of sites at which the classes are located. Unduplicated headcount is the most frequently used term for reporting student data. Students will be counted only once as an undergraduate or once as a graduate.

---

## FTES Explained

---

Full-Time Equivalent Students (FTES): FTES is a mathematical concept which attempts to provide a standardization tool for comparing universities with differing percentages of full-time and part-time students. The objective is to provide a theoretical number of full-time students based on the total number of credit hours enrolled in by all students, full-time and part-time, for a given fiscal year.

FTES for the various student levels are calculated using total fiscal year credit hours at specified levels divided by credit hour totals specific to that level. The student levels used are:

Undergraduate: Standard undergraduate-level courses, ranging from the 0- to the 400-level (e.g. MATH001, PSYC115, ACCT220, BMGT302, COMM424).

Graduate III: Doctoral research credits taken by doctoral students.

Graduate II: Graduate-level class credits taken by doctoral students.

Graduate I: All other graduate-level class credits

The final fiscal year FTES is the sum of the undergraduate FTES and the graduate FTES. This is represented as follows:

$$\text{Undergraduate FTES} = \frac{\text{Total fiscal year UG credit hours}}{30}$$

$$\text{Graduate I FTES} = \frac{\text{Total fiscal year GR I credit hours}}{24}$$

$$\text{Graduate II FTES} = \frac{\text{Total fiscal year GR II credit hours}}{20}$$

$$\text{Graduate III FTES} = \frac{\text{Total fiscal year GR III credit hours}}{18}$$

$$\begin{aligned} \text{Total fiscal year FTES} &= \text{Undergraduate FTES} + \text{Graduate I FTES} + \text{Graduate II FTES} \\ &\quad + \text{Graduate III FTES} \end{aligned}$$



# **FY 2012 Fact Book**

**University of Maryland University College**



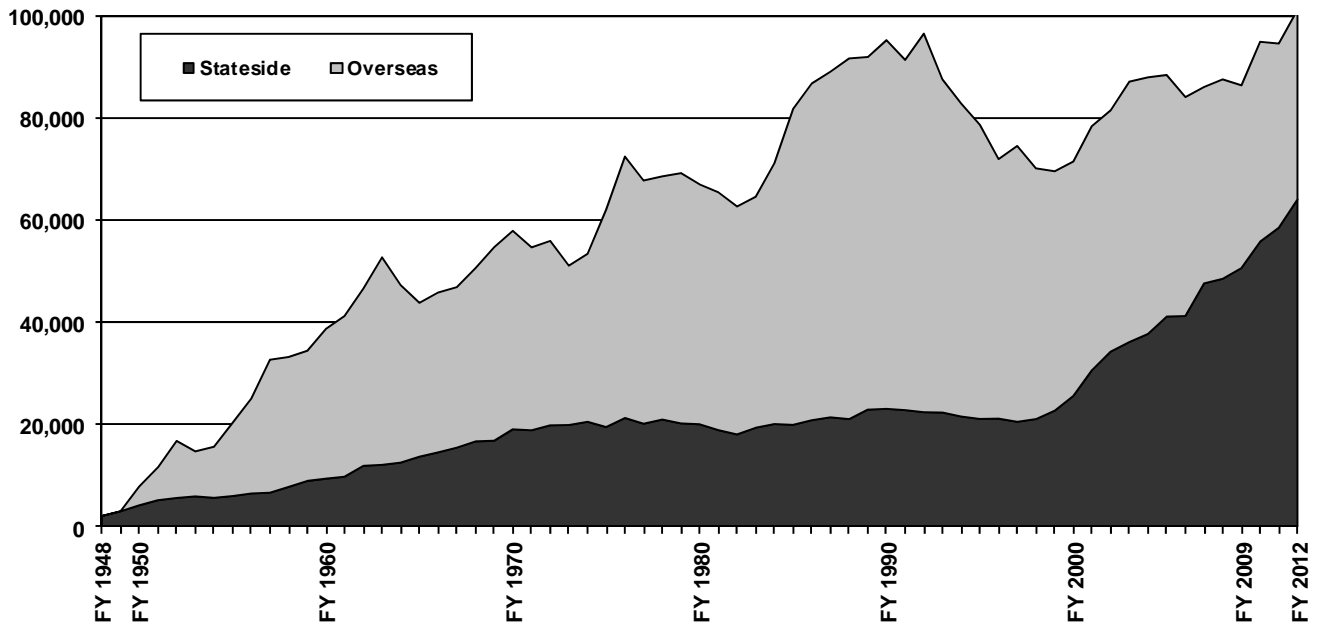
# Students

University of Maryland University College

---

## Fiscal Year Unduplicated Headcount Stateside and Overseas

---





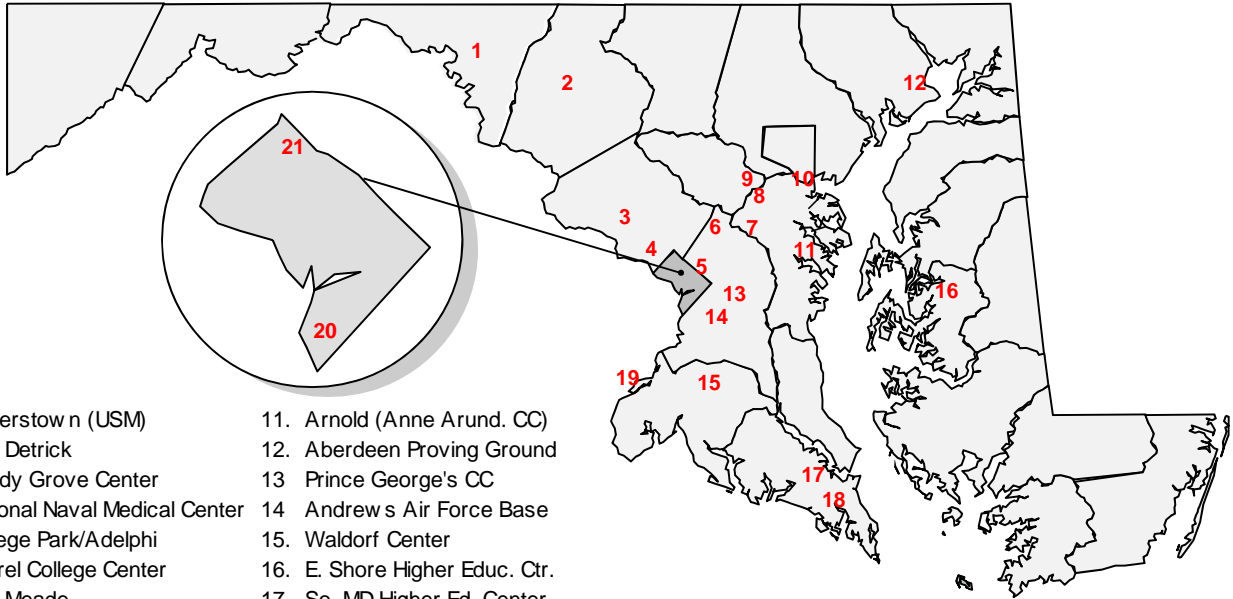
# STUDENT HEADCOUNT

## Worldwide Headcount Fiscal Years 1948 - 2012

<u>Year</u>	<u>Stateside</u>	<u>Overseas</u>	<u>Worldwide</u>	<u>Year</u>
FY48	2,142	0	2,142	FY48
FY50	4,234	3,696	7,930	FY50
FY55	6,070	14,329	20,399	FY55
FY60	9,457	29,351	38,808	FY60
FY61	9,860	31,478	41,338	FY61
FY62	11,979	34,691	46,670	FY62
FY63	12,163	40,627	52,790	FY63
FY64	12,608	34,711	47,319	FY64
FY65	13,757	30,133	43,890	FY65
FY66	14,620	31,284	45,904	FY66
FY67	15,537	31,418	46,955	FY67
FY68	16,755	33,912	50,667	FY68
FY69	16,878	37,895	54,773	FY69
FY70	19,133	38,853	57,986	FY70
FY71	18,943	35,804	54,747	FY71
FY72	19,894	36,120	56,014	FY72
FY73	19,965	31,197	51,162	FY73
FY74	20,587	32,906	53,493	FY74
FY75	19,563	42,630	62,193	FY75
FY76	21,336	51,189	72,525	FY76
FY77	20,218	47,606	67,824	FY77
FY78	21,038	47,605	68,643	FY78
FY79	20,291	49,000	69,291	FY79
FY80	20,109	46,972	67,081	FY80
FY81	18,972	46,566	65,538	FY81
FY82	18,118	44,636	62,754	FY82
FY83	19,424	45,247	64,671	FY83
FY84	20,165	51,070	71,235	FY84
FY85	20,010	61,844	81,854	FY85
FY86	20,903	65,935	86,838	FY86
FY87	21,469	67,675	89,144	FY87
FY88	21,114	70,637	91,751	FY88
FY89	22,981	69,038	92,019	FY89
FY90	23,135	72,181	95,316	FY90
FY91	22,879	68,568	91,447	FY91
FY92	22,466	74,133	96,599	FY92
FY93	22,397	65,208	87,605	FY93
FY94	21,625	61,275	82,900	FY94
FY95	21,155	57,592	78,747	FY95
FY96	21,204	50,835	72,039	FY96
FY97	20,596	53,995	74,591	FY97
FY98	21,120	49,109	70,229	FY98
FY99	22,761	46,887	69,648	FY99
FY00	25,652	45,908	71,560	FY00
FY01	30,714	47,801	78,515	FY01
FY02	34,321	47,268	81,589	FY02
FY03	36,206	50,991	87,197	FY03
FY04	37,818	50,234	88,052	FY04
FY05	41,208	47,291	88,499	FY05
FY06	41,309	42,879	84,188	FY06
FY07	47,699	38,462	86,161	FY07
FY08	48,607	39,038	87,645	FY08
FY09	50,707	35,764	86,471	FY09
FY10	55,862	39,133	90,732 *	FY10
FY11	58,593	36,075	92,211 *	FY11
FY12	64,127	36,256	97,001 *	FY12

\*Notes: Marginal duplication was reported in worldwide total prior to FY10.

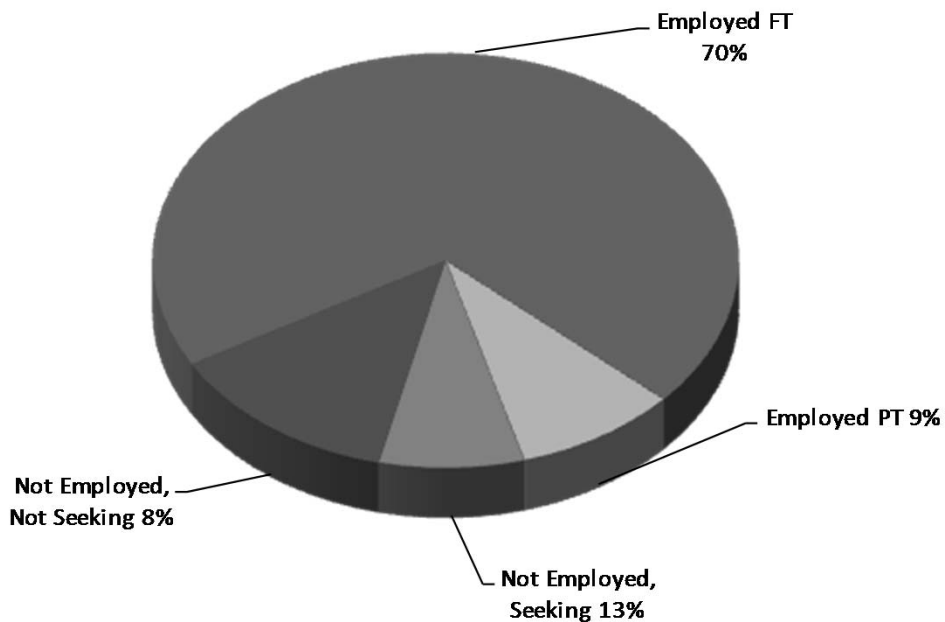
## UMUC Sites in Maryland and the Vicinity



- |                                  |                                |
|----------------------------------|--------------------------------|
| 1. Hagerstown (USM)              | 11. Arnold (Anne Arund. CC)    |
| 2. Fort Detrick                  | 12. Aberdeen Proving Ground    |
| 3. Shady Grove Center            | 13. Prince George's CC         |
| 4. National Naval Medical Center | 14. Andrews Air Force Base     |
| 5. College Park/Adelphi          | 15. Waldorf Center             |
| 6. Laurel College Center         | 16. E. Shore Higher Educ. Ctr. |
| 7. Fort Meade                    | 17. So. MD Higher Ed. Center   |
| 8. Arundel Mills                 | 18. Patuxent River NAWC        |
| 9. Dorsey Station                | 19. Fort Belvoir               |
| 10. CGY at Curtis Bay            | 20. Bolling/Anacostia          |
|                                  | 21. Walter Reed Army Medical   |

## UMUC Stateside Undergraduate Student Employment Status

**Spring 2012 Survey of Current Students  
(Undergraduate Only)**





# **FTE Students**

**University of Maryland University College**

## FULL-TIME EQUIVALENT STUDENTS

### FY 1976 – 2012 Worldwide Full-Time Equivalent Students (FTES)

<u>Year</u>	<u>Stateside</u>	<u>Overseas</u>	<u>Worldwide</u>
FY76	5,153	11,157	16,310
FY77	4,751	10,129	14,880
FY78	4,879	12,071	16,950
FY79	4,622	10,516	15,138
FY80	4,552	10,464	15,016
FY81	4,784	10,802	15,586
FY82	4,587	10,240	14,827
FY83	4,523	10,022	14,545
FY84	5,509	11,317	16,826
FY85	5,564	13,217	18,781
FY86	5,985	13,891	19,876
FY87	6,270	14,046	20,316
FY88	6,454	14,668	21,122
FY89	6,741	14,129	20,870
FY90	6,821	15,271	22,092
FY91	6,773	14,246	21,019
FY92	6,775	15,297	22,072
FY93	6,825	14,034	20,859
FY94	6,633	13,697	20,330
FY95	6,676	12,967	19,643
FY96	6,907	11,937	18,844
FY97	6,997	12,188	19,185
FY98	7,213	11,273	18,486
FY99	7,763	11,241	19,004
FY00	8,678	11,079	19,757
FY01	10,344	11,376	21,720
FY02	11,823	11,199	23,022
FY03	12,525	12,076	24,601
FY04	13,379	12,074	25,453
FY05	14,513	11,094	25,607
FY06	14,795	10,243	25,038
FY07	16,588	9,541	26,129
FY08	17,055	9,666	26,721
FY09	18,368	8,904	27,272
FY10	20,602	9,851	30,453
FY11	22,089	9,851	31,940
FY12	25,390	9,821	35,211

Note: Summer term credit hours are included.

Source: Office of Institutional Research .

## FULL-TIME EQUIVALENT STUDENTS

Fiscal Years 2005– 2012

Worldwide FTES

by Division, by Level

	<u>FY05</u>	<u>FY06</u>	<u>FY07</u>	<u>FY08</u>	<u>FY09</u>	<u>FY10</u>	<u>FY11</u>	<u>FY12</u>
<b>Stateside</b>								
Undergraduate	10,522	10,591	11,775	11,811	12,023	13,603	14,330	17,118
Graduate	3,991	4,218	4,813	5,244	6,345	6,999	7,759	8,272
Stateside Total	14,513	14,809	16,588	17,055	18,368	20,602	22,089	25,390
<b>Asian Division</b>								
Undergraduate	5,462	4,796	4,103	4,198	3,630	3,939	4,037	3,878
Graduate	29	27	0	43	28	25	2	0
Division Total	5,491	4,823	4,103	4,241	3,658	3,964	4,039	3,878
<b>European Division</b>								
Undergraduate	6,583	6,266	5,400	5,365	5,005	5,643	5,566	5,698
Graduate	0	5	38	60	241	244	246	245
Division Total	6,583	6,271	5,438	5,425	5,246	5,887	5,812	5,943
<b>Worldwide Totals</b>								
Undergraduate	22,567	21,653	21,278	21,374	20,658	23,185	23,933	26,694
Graduate	4,020	4,250	4,851	5,347	6,614	7,268	8,007	8,517
<b>Grand Total</b>	26,587	25,903	26,129	26,721	27,272	30,453	31,940	35,211

Note: Summer term credit hours are included.

Source: Office of Institutional Research



# Degrees

University of Maryland University College

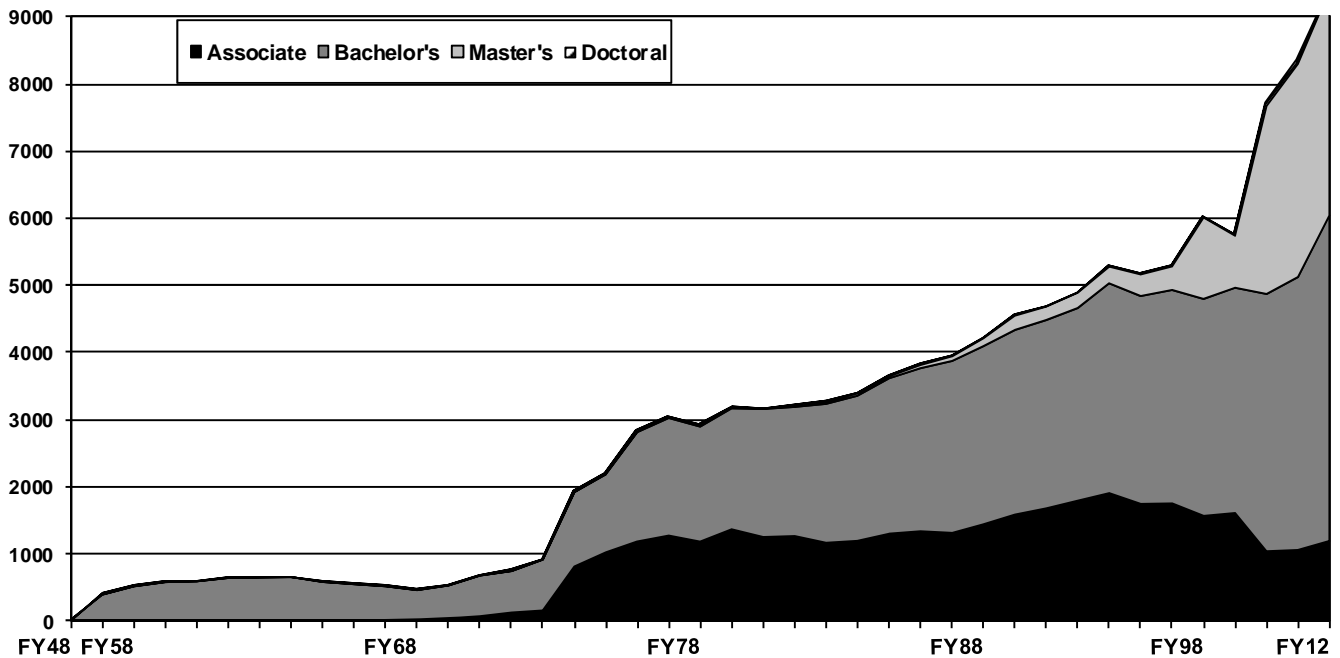
## DEGREES AWARDED

### Total Worldwide Degrees Awarded Fiscal Year 1948 – Fiscal Year 2012

UMUC Worldwide	<u>Associate</u>	<u>Bachelor's</u>	<u>Master's</u>	<u>Doctoral</u>	<u>Total</u>
FY 1948 - FY 2011	50,476	117,814	27,116	172	195,578
FY 2012	1,185	4,859	3,363	47	9,454
<b>Grand Total</b>	51,661	122,673	30,479	219	205,032

Source: Degree Information System (DIS).

### Fiscal Year Worldwide Degrees Awarded



## DEGREES AWARDED

### FY 2005 – FY 2012 Worldwide Degrees Awarded Undergraduate-level Awards by Degree Level, by Division

	Undergraduate		
	<u>Certificates</u>	<u>Associate's</u>	<u>Bachelor's</u>
<b>Stateside</b>			
FY 2005	416	107	2,677
FY 2006	334	108	2,667
FY 2007	357	169	2,809
FY 2008	415	191	2,793
FY 2009	449	248	2,698
FY 2010	548	295	3,070
FY 2011	584	285	3,270
FY 2012	659	398	3,882
<b>Asian Division</b>			
FY 2005	36	351	318
FY 2006	47	338	346
FY 2007	65	374	407
FY 2008	65	329	355
FY 2009	59	207	253
FY 2010	63	261	327
FY 2011	91	253	314
FY 2012	87	260	374
<b>European Division</b>			
FY 2005	107	610	592
FY 2006	66	555	543
FY 2007	102	520	536
FY 2008	81	421	429
FY 2009	102	450	478
FY 2010	80	477	440
FY 2011	113	514	486
FY 2012	151	527	603
<b>Worldwide Totals</b>			
FY 2005	559	1,068	3,587
FY 2006	447	1,001	3,556
FY 2007	524	1,063	3,752
FY 2008	561	941	3,577
FY 2009	610	905	3,429
FY 2010	691	1,033	3,837
FY 2011	788	1,052	4,070
FY 2012	897	1,185	4,859



## DEGREES AWARDED

### FY 2005 – FY 2012 Worldwide Degrees Awarded Graduate-level Awards by Degree Level, by Division

	<u>Post-Bacc. Certificates</u>	<u>Master's</u>	<u>Doctorate</u>
<b>Stateside</b>			
FY 2005	303	1,656	8
FY 2006	272	1,766	6
FY 2007	351	2,123	11
FY 2008	386	2,089	14
FY 2009	352	2,293	30
FY 2010	410	2,783	42
FY 2011	565	3,120	55
FY 2012	692	3,284	47
<b>Asian Division</b>			
FY 2005	--	11	--
FY 2006	--	7	--
FY 2007	--	4	--
FY 2008	--	0	--
FY 2009	--	0	--
FY 2010	--	0	--
FY 2011	--	9	--
FY 2012	--	--	--
<b>European Division</b>			
FY 2005	--	--	--
FY 2006	--	--	--
FY 2007	--	9	--
FY 2008	14	14	--
FY 2009	7	25	--
FY 2010	18	21	--
FY 2011	8	52	--
FY 2012	30	79	--
<b>Worldwide Totals</b>			
FY 2005	303	1,667	8
FY 2006	272	1,773	6
FY 2007	351	2,136	11
FY 2008	400	2,103	14
FY 2009	359	2,318	30
FY 2010	428	2,804	42
FY 2011	573	3,181	55
FY 2012	722	3,363	47

Source: Degree Information System (DIS).

## DEGREES AWARDED

### Fiscal Year 2012 Stateside Degrees Awarded Ethnic Category, by Degree Level

	<u>Bachelor's</u>		<u>Master's</u>		<u>Doctorate</u>	
	#	%	#	%	#	%
African American	979	25.2%	1,259	38.3%	19	40.4%
American Indian/Alaska Native	14	0.4%	13	0.4%	0	--
Asian	208	5.4%	200	6.1%	1	2.1%
Hispanic	253	6.5%	152	4.6%	2	4.3%
White	1,827	47.1%	1,129	34.4%	20	42.6%
Native Hawaiian/Other Pacific Islander	10	0.3%	6	0.2%	0	--
Two or more races	40	1.0%	9	0.3%	0	--
Other *	551	14.2%	516	15.7%	5	10.6%
<b>Total</b>	<b>3,882</b>	<b>100.0%</b>	<b>3,284</b>	<b>100.0%</b>	<b>47</b>	<b>100.0%</b>

\*Note: "Other" includes Unknown and Non-Resident Alien.

Source: Degree Information Service (DIS).



# **Finance**

**University of Maryland University College**

## FINANCE

### Fall 1988 - 2012 Stateside Tuition and Mandatory Charges for Students Who Are Maryland Residents

	Undergraduate		Graduate**		
	Tuition per credit hour	Fees	Tuition per credit hour	Fees	
1988	\$92	\$3/course Reg. Fee	\$140	\$5/course Reg. Fee	1988
1989	\$110	\$3/course Reg. Fee	\$175	\$5/course Reg. Fee	1989
1990	\$117	\$3/course Reg. Fee	\$190	\$5/course Reg. Fee	1990
1991	\$127	\$3/course Reg. Fee	\$205	\$5/course Reg. Fee	1991
1992	\$145	\$3/course Reg. Fee	\$220	\$5/course Reg. Fee	1992
1993	\$160	\$3/course Reg. Fee	\$240	\$7/course Reg. Fee	1993
1994*	\$169		\$252		1994*
1995*	\$174		\$260		1995*
1996*	\$176		\$265		1996*
1997*	\$181		\$273		1997*
1998*	\$183		\$277		1998*
1998*	\$184		\$277		1998*
2000*	\$191		\$292		2000*
2001*	\$197		\$302		2001*
2002*	\$206	\$5/cr. hr. Tech. Fee	\$315	\$5/cr. hr. Tech. Fee	2002*
2003*	\$217	\$5/cr. hr. Tech. Fee	\$332	\$5/cr. hr. Tech. Fee	2003*
2004*	\$221	\$5/cr. hr. Tech. Fee	\$339	\$5/cr. hr. Tech. Fee	2004*
2005*	\$230	\$5/cr. hr. Tech. Fee	\$353	\$5/cr. hr. Tech. Fee	2005*
2006*	\$230	\$5/cr. hr. Tech. Fee	\$371	\$5/cr. hr. Tech. Fee	2006*
2007*	\$230	\$5/cr. hr. Tech. Fee	\$372	\$5/cr. hr. Tech. Fee	2007*
2008*	\$230	\$10/cr. hr. Tech. Fee	\$412	\$10/cr. hr. Tech. Fee	2008*
2009*	\$230	\$10/cr.hr. Tech. Fee	\$428	\$10/cr. hr. Tech. Fee	2009*
2010*	\$237	\$13/cr.hr. Tech. Fee	\$445	\$13/cr. hr. Tech. Fee	2010*
2011*	\$244	\$13/cr.hr. Tech. Fee	\$458	\$13/cr. hr. Tech. Fee	2011*
2012*	\$251	\$15/cr.hr. Tech. Fee	\$458	\$15/cr.hr. Tech. Fee	2012*

Notes: 1) Mandatory charges exclude charges made at original matriculation (such as application fees) and charges not billed to some students.

\* Registration fee now included in tuition charge.

\*\* Tuition rates are different, and the technology fee is excluded, for students in the MBA, Executive and Doctorate of Management programs.

Source: Student Services.



# **Distance Education**

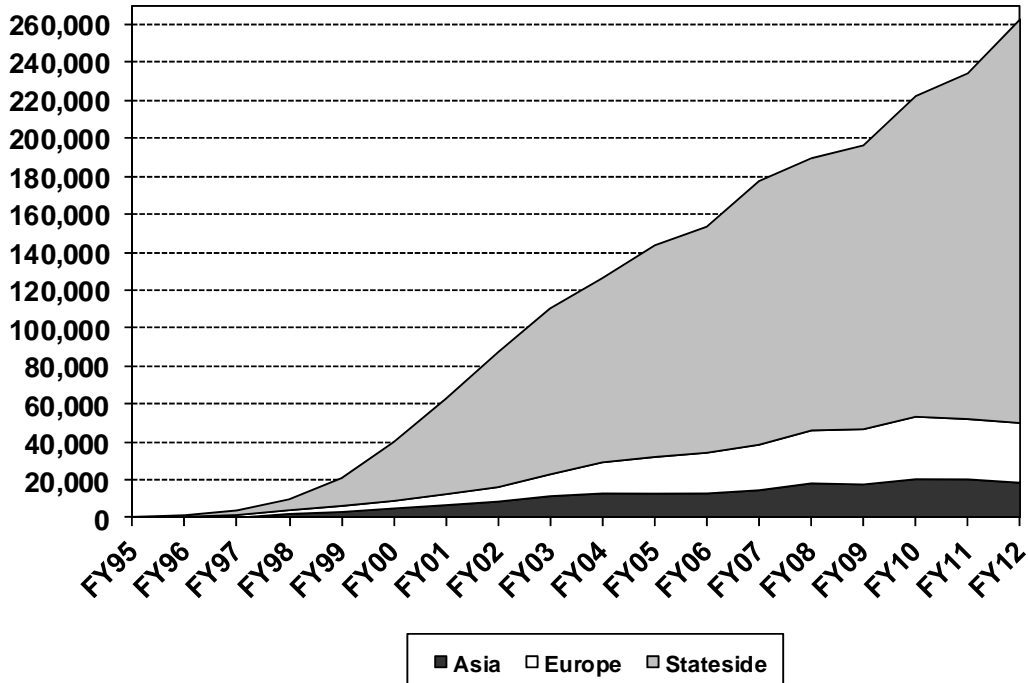
**University of Maryland University College**

## DISTANCE EDUCATION

### Worldwide Online Course Enrollments FY 1995 – FY 2012\* by Division

#### Online-Only Course Enrollments

Fiscal Year	European Division	Asian Division	Stateside	Worldwide
1995	1	Not Avail.	426	427
1996	509	Not Avail.	798	1,307
1997	1,420	Not Avail.	2,428	3,848
1998	1,997	1,979	5,720	9,696
1999	3,144	3,046	14,615	20,805
2000	3,979	4,886	31,000	39,865
2001	5,739	6,646	50,301	62,686
2002	6,591	8,706	72,126	87,423
2003	11,331	11,527	87,565	110,423
2004	16,400	12,797	97,144	126,341
2005	19,352	12,681	111,511	143,544
2006	21,434	12,801	119,249	153,484
2007	24,039	14,454	139,023	177,516
2008	27,880	18,115	143,510	189,505
2009	29,119	17,548	149,664	196,331
2010	32,927	20,294	169,047	222,268
2011	31,804	20,190	182,249	234,243
2012	31,513	18,413	212,782	262,708
<b>Grand Total</b>	269,179	184,083	1,589,158	2,042,420



\*Online information not available for Asian Division prior to FY98

## DISTANCE EDUCATION

### FY 2012 Worldwide Online and Total Student Headcounts

	<u>Stateside</u>	<u>Asia*</u>	<u>Europe*</u>	<u>Total</u>
<b>Number of Students Taking At Least One Online Course</b>	62,065	7,322	12,297	78,056
<b>Total Headcount</b>	64,127	14,301	22,842	97,001
<b>% of Total Headcount Taking At Least One Online Course</b>	97%	51%	54%	80%

\*Asia's online and distance headcount includes AD students and ED students taking classes based in Asia. Likewise, Europe's online headcount includes ED and AD students in European based classes.

## DISTANCE EDUCATION

---

### Stateside Online Courses\*, Sections\*\* and Enrollments\*\*\* FY 1998 – FY 2012

---

<b>Fiscal Year</b>	<b><u>Courses</u></b>	<b><u>Sections</u></b>	<b><u>Enrollments</u></b>
1998	142	372	5,720
1999	210	823	14,615
2000	284	1,223	31,000
2001	382	2,059	50,301
2002	524	2,711	72,126
2003	540	3,050	87,565
2004	561	3,749	97,144
2005	600	4,572	111,511
2006	652	5,271	119,249
2007	688	5,977	139,023
2008	782	5,510	143,510
2009	752	6,033	149,664
2010	813	6,942	169,047
2011	836	7,894	182,249
2012	941	8,531	212,782

Note: Fiscal year counts are taken from the end of fiscal year freeze and may not exactly match the sum of mid-term freeze data as presented in similar tables reporting mid-term freeze data.

\*Courses reported represent an unduplicated number of unique online courses with at least one valid enrollment during the fiscal year. This does not represent the entire online course inventory.

\*\*Sections are a sum of all sections with at least one valid enrollment during the fiscal year.

\*\*\*Enrollments include partial withdrawals, whereby a student withdrew from the course after the term began and was therefore no longer eligible for a 100% refund.